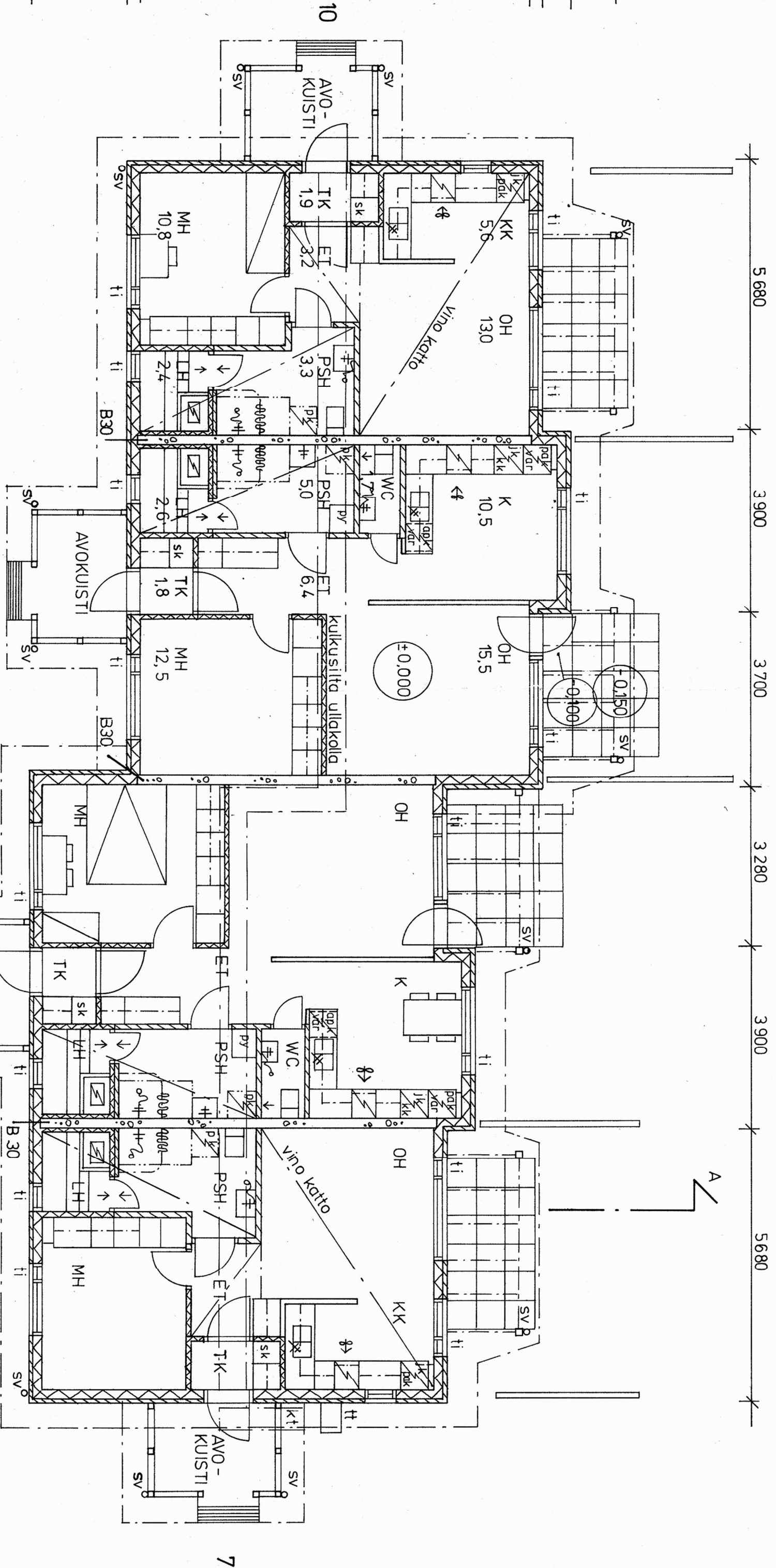


SALMUNNIE 1, TALO C

2h+k+s 45m<sup>2</sup> 2h+k+s 59m<sup>2</sup>

2h+k+s 59m<sup>2</sup>

2h+k+s 45m<sup>2</sup>



±0,000 = +85,700

--- alaslaskettu katto h = 2200  
 ti = tuuletusikkuna

8

7

9

10